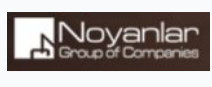


## Elysian Ayfilon residential complex

Location **Iskele, Dikarpaz**



### About the project



Developer	<b>Noyanlar</b>
Start of sale	<b>01.10.2023</b>
Key handover	<b>2026</b>
Houses/blocks	<b>34</b>
Building floor	<b>2</b> Min <b>2</b> Max
Units total	<b>34 - Studio, 34 - 1+1, 136 - 2+1</b>

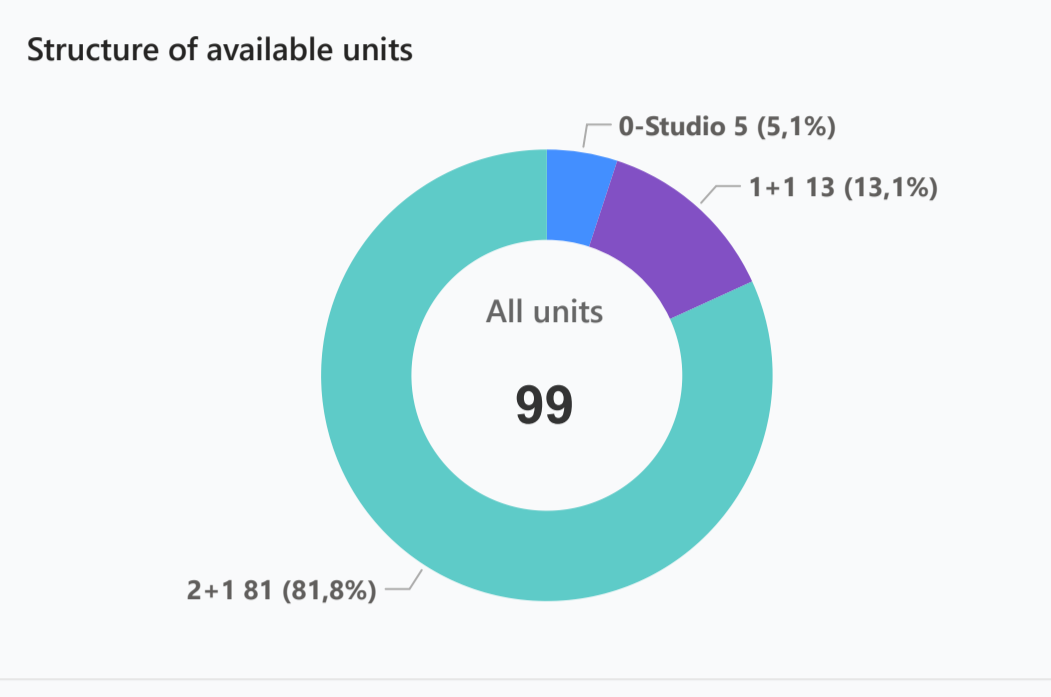
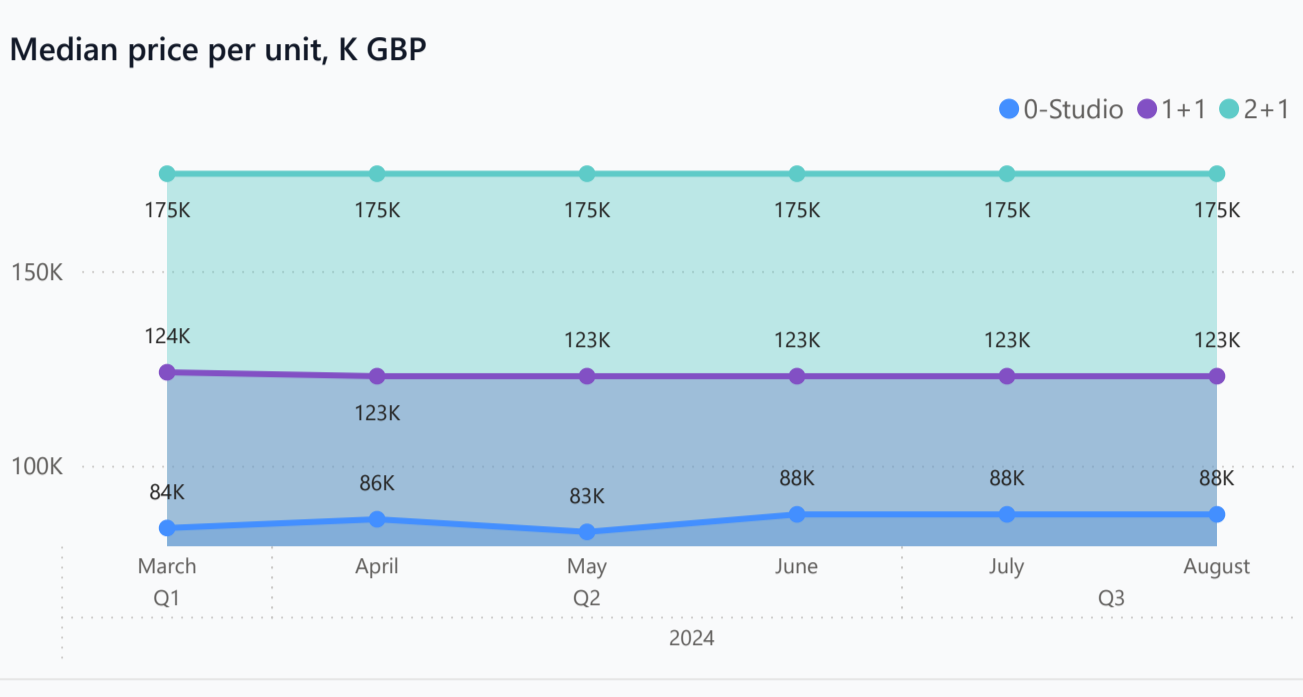
Distance to the sea - 1500 m  
 Distance to key locations:  
 Airport 40 km. Supermarket 5 km. School 6 km.

Elysian Ayfilon is not just a residential project, but an experience that will transform your lifestyle. We invite you to a true corner of paradise with the touch we have added to Ayfilon with the meaning of "Elysian," meaning paradise, in our name. While our project stands out with its modern architecture and luxury design, it also offers a life that is intertwined with nature. Elysian Ayfilon opens the doors to a relaxing life in a peaceful and tranquil environment surrounded by greenery.

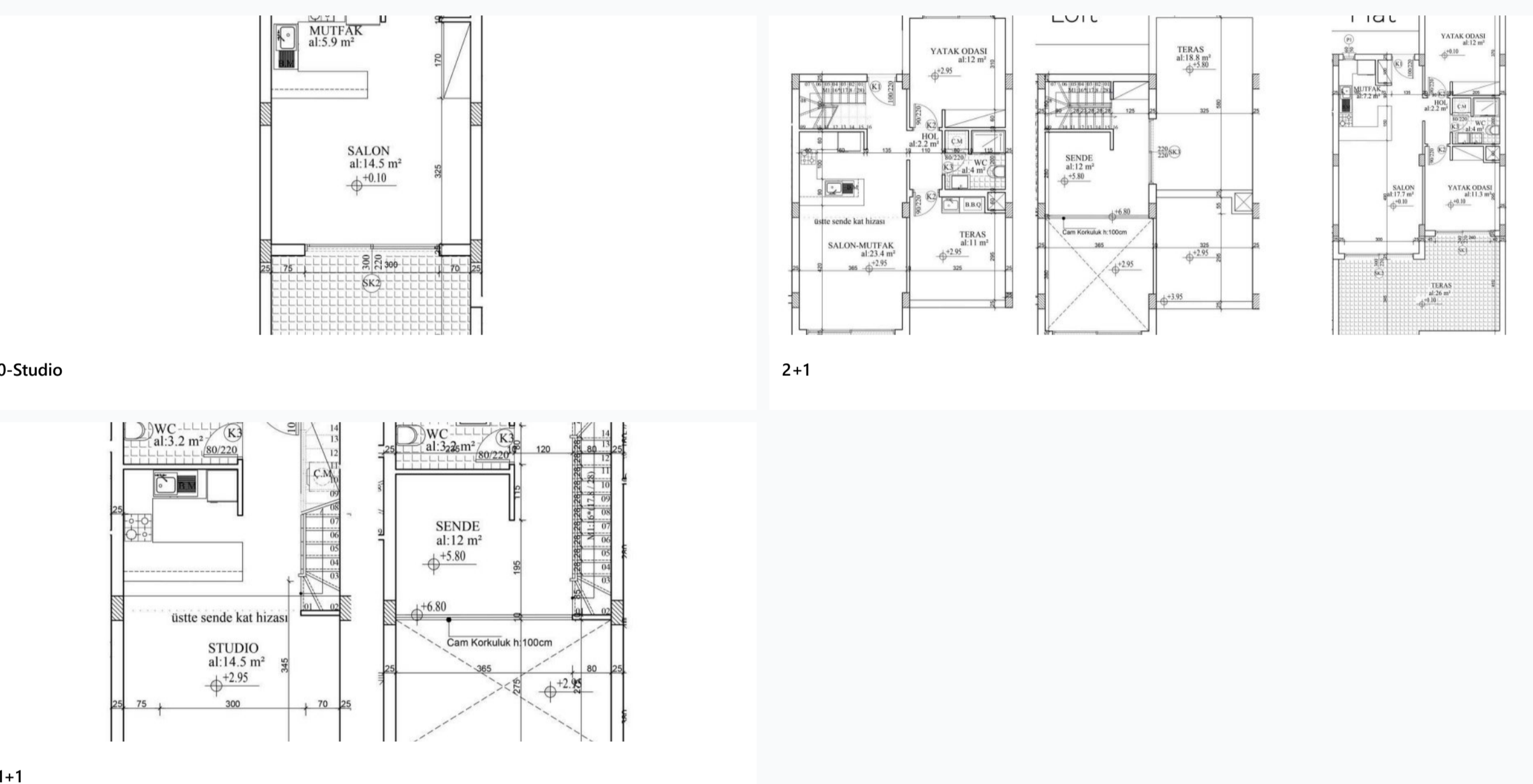
### Complex infrastructure

- Aqua park
- Bar
- Cafe
- Kid's playground
- Open pool
- Tennis court

### Available units **99** / 204 total



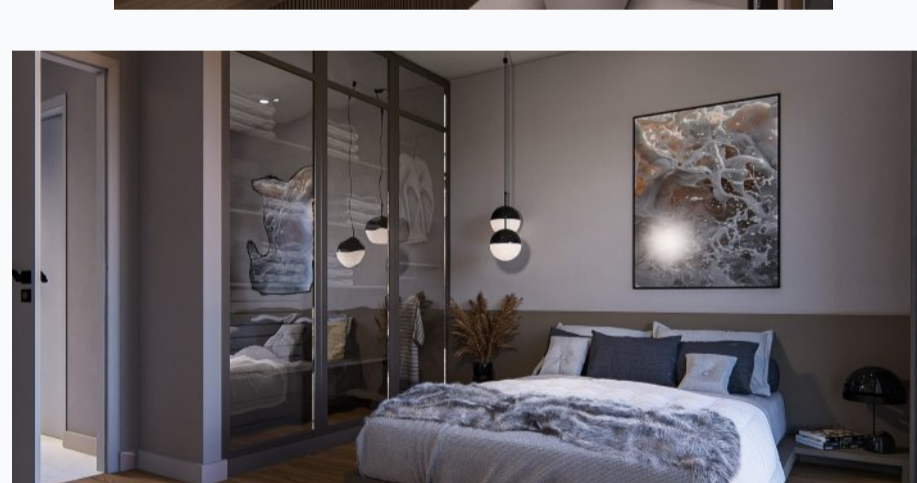
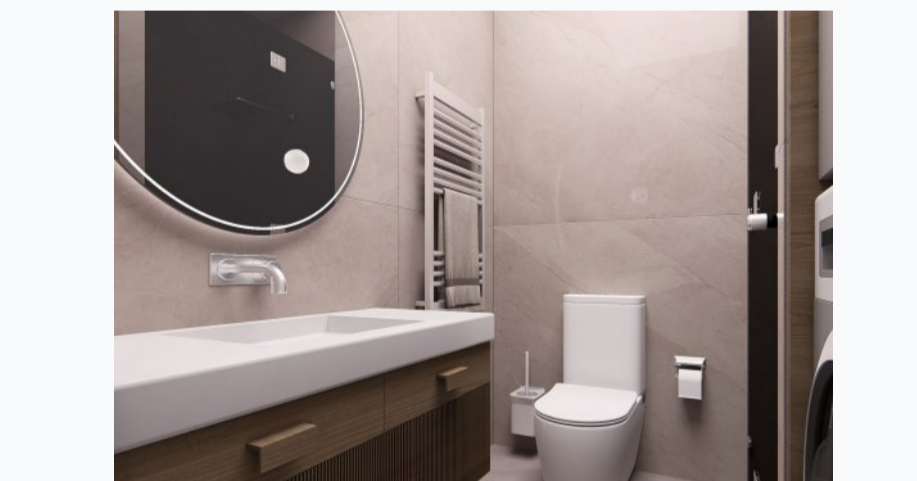
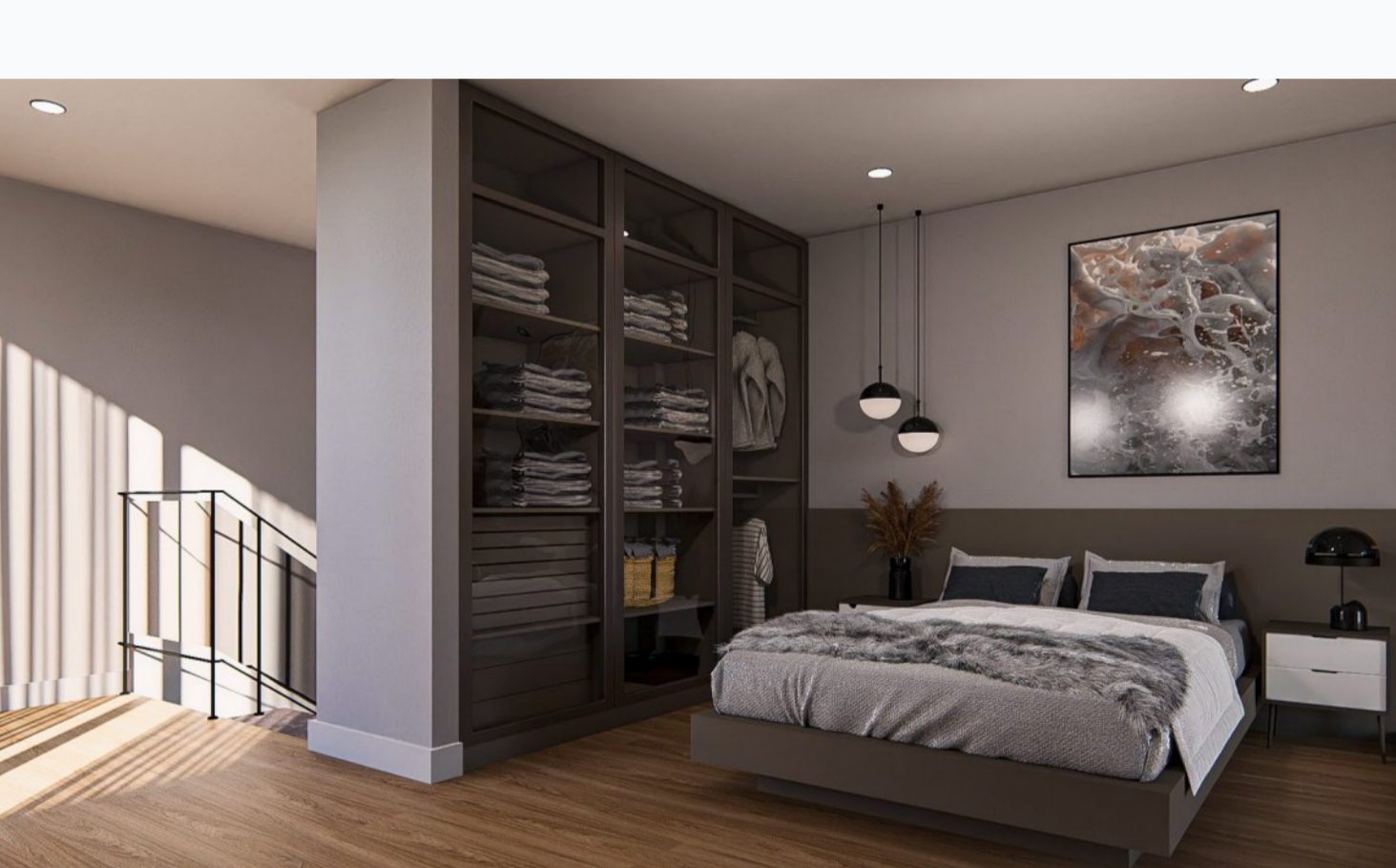
### Plans



<b>Payment plans</b> <b>Deposit (non-refundable) Minimum 2500 GBP</b>			
Option 1 <input checked="" type="radio"/> Down payment <b>30%</b> Installments months: 30% till key, 40%... Discount: - Offer: -	Option 2 <input checked="" type="radio"/> Down payment - Installments months: - Discount: - Offer: -	Option 3 <input checked="" type="radio"/> Down payment - Installments months: - Discount: - Offer: -	Option 4 <input checked="" type="radio"/> Down payment - Installments months: - Discount: - Offer: -
Special offer:  Fully furnished design package		Rental guarantee: -	
Trafo 1750 GBP	Resale -	Maintenance fee 700-800 GBP annually	Rental services -

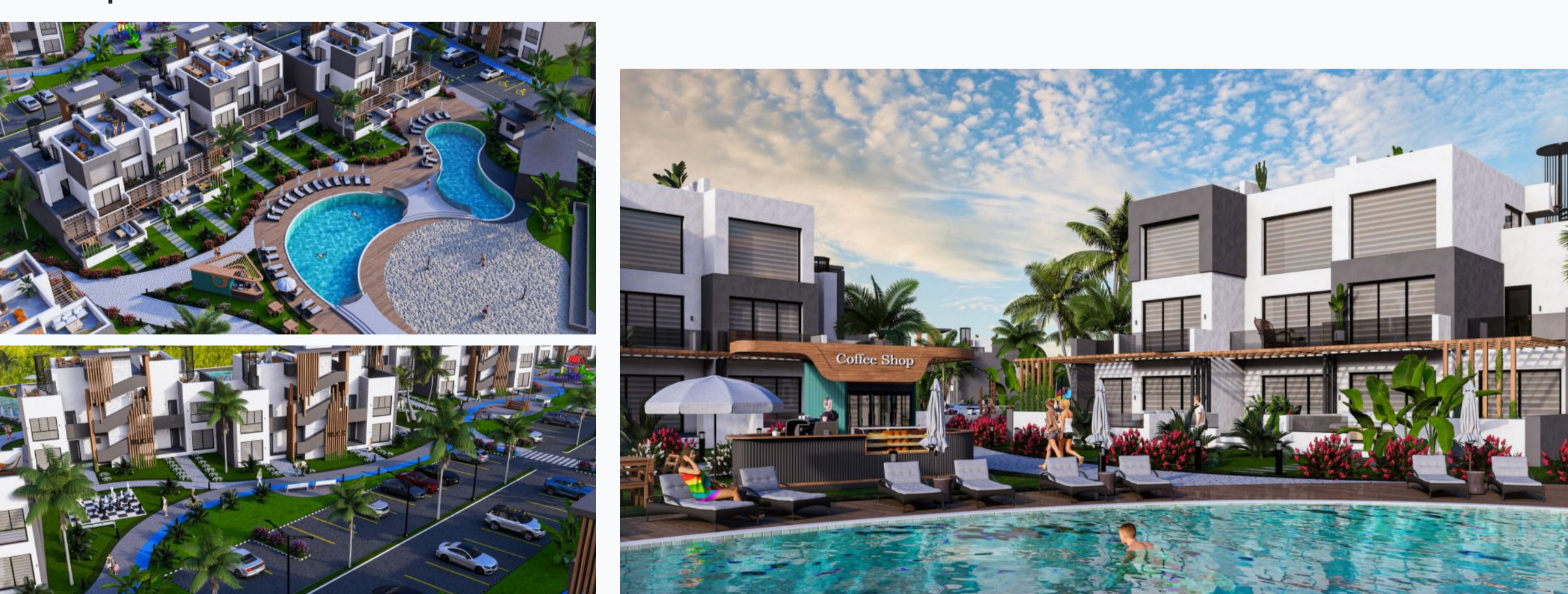
Bedrooms	Subtype	Block	Unit №	Floor	View	Bathroom	Internal area, sq. m	Balcony/ Terrace, sq. m	Rooftop terrace, sq. m	Garden, sq. m	Gross covered area, sq. m	Current price, GBP	Price per sqm, GBP
0-Studio	Flat	E1	B	0			38	17			55	87 500	1 591
0-Studio	Flat	E2	B	0			38	17			55	87 500	1 591
0-Studio	Flat	E3	B	0			38	17			55	87 500	1 591
0-Studio	Flat	E5	B	0			38	17			55	87 500	1 591
0-Studio	Flat	E6	B	0			38	17			55	83 000	1 509
1+1	Loft	E1	E	01			61	38			99	127 500	1 288
1+1	Loft	E10	E	01			61	38			99	120 000	1 212
1+1	Loft	E11	E	01			61	38			99	120 000	1 212
1+1	Loft	E12	E	01			61	38			99	120 000	1 212
1+1	Loft	E14	E	01			61	38			99	120 000	1 212
1+1	Loft	E2	E	01			61	38			99	127 500	1 288
1+1	Loft	E4	E	01			61	38			99	127 500	1 288
1+1	Loft	E5	E	01			61	38			99	127 500	1 288
1+1	Loft	E6	E	01			61	38			99	123 000	1 242
1+1	Loft	E8	E	01			61	38			99	123 000	1 242
1+1	Loft	E9	E	01			61	38			99	123 000	1 242
1+1	Loft	W10	E	01			61	38			99	122 500	1 237
1+1	Loft	W14	E	01			61	38			99	120 000	1 212
2+1	Flat	E1	A	0			70	26			96	182 500	1 901
2+1	Flat	E1	C	0			70	26			96	182 500	1 901
2+1	Loft	E1	D	01			76	59			135	187 500	1 389
2+1	Loft	E1	F	01			76	59			135	187 500	1 389
2+1	Flat	E10	C	0			70	26			96	165 000	1 719
2+1	Flat	E10	A	0			70	26			96	167 500	1 745
2+1	Loft	E10	F	01			76	59			135	170 000	1 259
2+1	Loft	E10	D	01			76	59			135	172 500	1 278
2+1	Flat	E11	A	0			70	26			96	165 000	1 719
2+1	Flat	E11	C	0			70	26			96	165 000	1 719

### Interior specification



- Ceramic flooring
- Double glazed windows
- Laminate flooring in the bedrooms

### Exterior specification



- Glass fence balcony
- Terracing with inbuilt lighting & power sockets

### Location of complex

